

LINEAR POWER INTERNATIONAL

COMPANY
PROFILE

DIESEL POWER GENERATION GAS POWER GENERATION SOLAR POWER PLANT
GENERATOR SYNCHRONIZING BUSDUCT HMI SCADA HYBRID CONTROLS
FORKLIFT MATERIAL HANDLING MARINE OUTBOARDS ENGINE SPARE PARTS



LINEAR POWER INTERNATIONAL COMPANY LIMITED

WHERE ARE WE?

MANDALAY BRANCH

No (ZaZa-1/37), Room (3),
Ngu Shwe War St, BET 59 x 60 St,
Kan Thar Yar Qtr, Chan Mya Thar Si
Tsp
+959 259 101 414

YANGON HEAD OFFICE

A1, Bayint Naung Road
Shwe Pin Lon Avenue 27 Ward
North Dagon, Yangon
+959 730 300 73

WAREHOUSE & SERVICE

Zone 2 (Extension) 144/(458-459)
Corner of Sin Phyu Shin St &
Tine Tar Min Gyi St. South Dagon
Tsp, Yangon, Myanmar.
+959 429 917 774

MYEIK BRANCH

No 26, Strand Road, Dawei Su Wrd,
Myeik,
+959 777 795 809





MISSION

To be a top leading company
in power systems and
related business

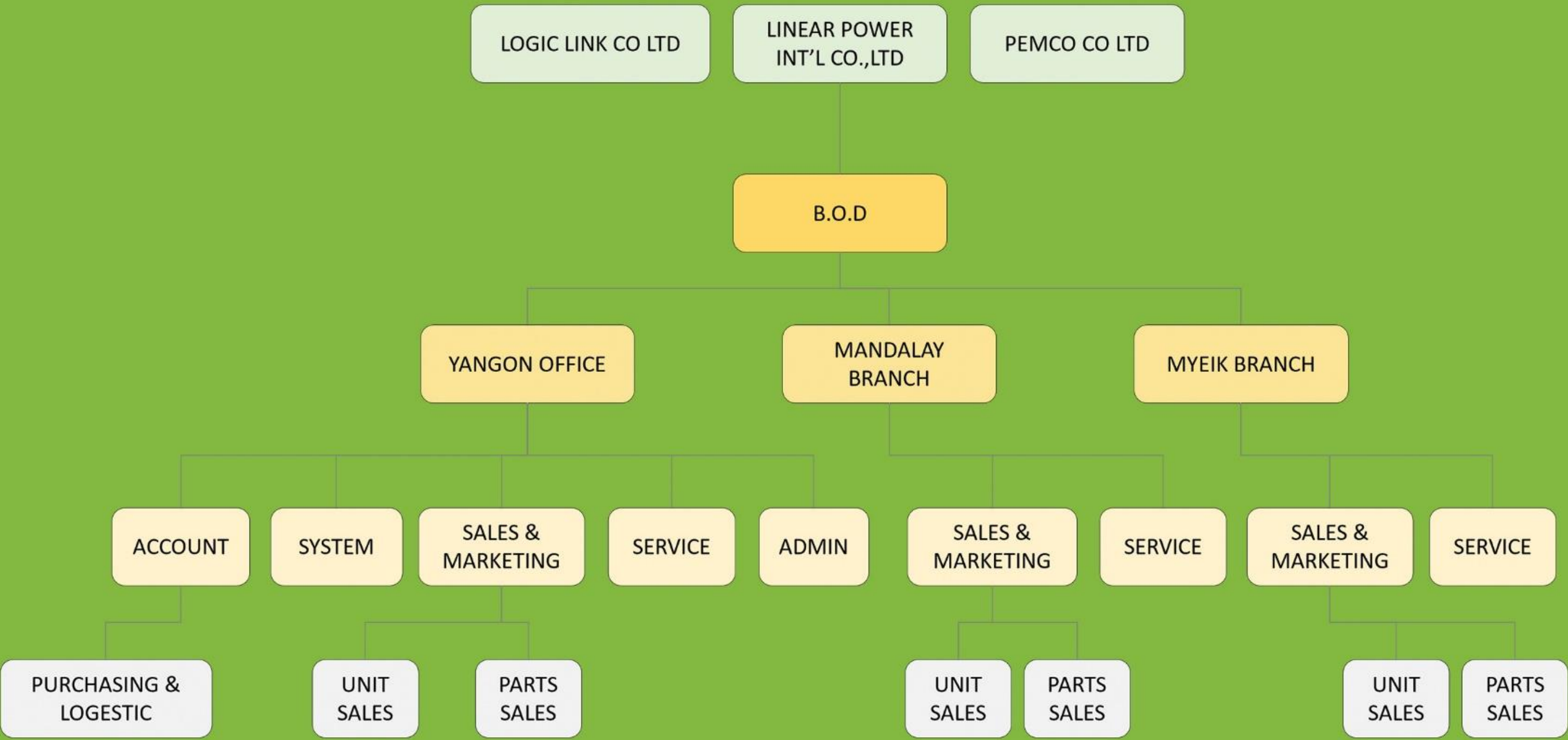
VISSION

To provide excellent products
and service to our customers by
working with energy,
passion & respect

VALUE

Keep focus on world wide
energy solution trend.
A life long business partner

LINEAR POWER INTERNATIONAL COMPANY LIMITED
ORGANIZATION CHART



LINEAR POWER INTERNATIONAL COMPANY LIMITED

MEET B.O.D



THAW ZIN (MANAGING DIRECTOR)

Mr. Thaw Zin is Managing Director of Linear Power International Co., Ltd and who came from Service Engineering and Power Generation back ground. He has good experiences in Myanmar Railways as a Locomotive Engineer for over 10 Years. He was working in Caterpillar Dealership (both oversea / local) for more than 15 years as well as another 3 years in Volvo Dealership as a management team member and Chief Operation Officer. There are 5 BOD(Board of Directors) and who is the one has good experience with Engineering, Power Generation, Control System and most demanding M&E Engineering Solutions.



SHEET MAUNG (DIRECTOR)

Mr. Sheet Maung is one of the Director in Linear Power International Co., Ltd and who came from Sales and Marketing sectors from Heavy Equipment Fields. He has 12 years of Sales and Marketing in Caterpillar Dealership and Heavy Equipment Engineering Company. He is now leading in Sales and Marketing sector in Linear Power International Co., Ltd.



AYE CHAN MYO (DIRECTOR)

Mr Aye Chan Myo is also one of the LPI's BOD member, with more than 6 years of executive management experiences in supply chain, logistics field and handling the importing matters & logistics proccess at Linear Power International.

LINEAR POWER INTERNATIONAL COMPANY LIMITED

FACTS

COMPANY NAME
LINER POWER INTERNATIONAL

COMPANY CATEGORY
Trading, Engineering, Services

ESTABLISHED YEAR
2010

COMPANY REGISTRATION NO.
1951/2009-2010

CAPITAL
3 Billions Kyats

PARTNER COMPANY

PEMCO (M&E Contractor)
Logic Link Company



Team members



■ Sales & Marketing ■ Service ■ System ■ Account ■ Purchasing & Logistic ■ Admin



AUTHORIZED DISTRIBUTOR

MGS B,C SERIES



MGS-B
(For Stand-by Power Supply)



MGS-B
(For Prime Power Supply)



MGS-C
(For Prime & Continuous Power Supply)



MGS-HV
(For High Voltage Power Supply)



Low Noise Level 75 dB(A)

MGS G SERIES

- (1) World class fuel efficiency, 43.1%
- (2) Proven reliability and excellent performance
- (3) Meets rigorous quality requirements
- (4) From low to high voltage available
- (5) Both fuel-efficient and eco-friendly
- (6) Various gas types acceptable
- (7) High performance heat recovery system available
- (8) Black start capability for uninterruptible power supply

MU-G SERIES



- (1) Wide range of output from 735 kVA to 4500 kVA
- (2) A variety of control systems to suit all the user's requirement
- (3) Appropriate for continuous operation with its excellent fuel efficiency
- (4) Compact yet powerful systems. The minimum space are required for installation
- (5) From low to high voltage available
- (6) Black start capability for uninterruptible power supply

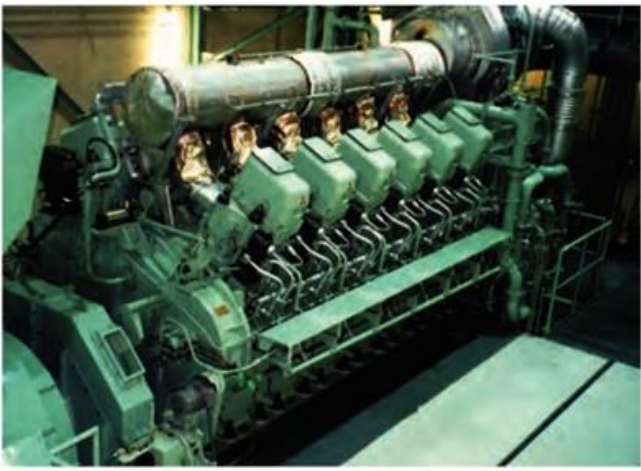


MEGA NINJA SERIES



- (1) Generation within 24 hours of delivery
 - (a) ISO 40 foot container
 - (b) Quick connector for external piping/wiring
- (2) Very quick and efficient maintenance possible
 - (a) Just replace with another container generator set
- (3) High performance heat recovery system available
 - (a) Additional ISO 20 foot high cube container
 - (b) Supplying both hot water and/or steam

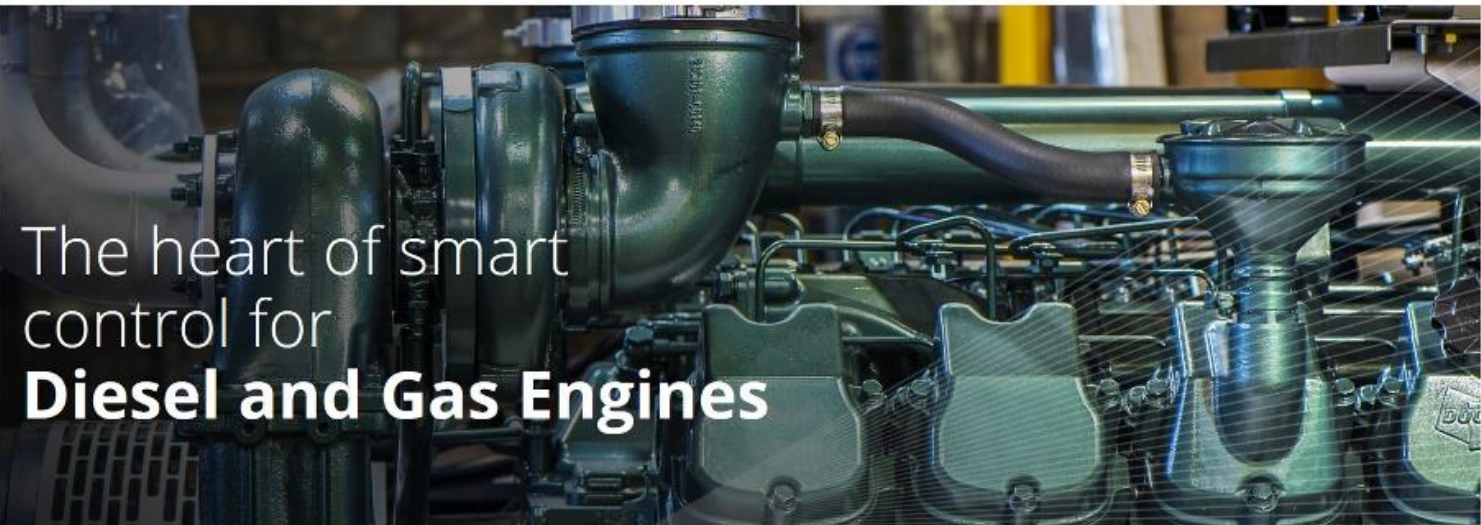
KU DIESEL SERIES



- (1) High outputs power from 3760 kW to 15400 kW
- (2) Low fuel cost due to high fuel efficiency
- (3) Long planned maintenance interval
- (4) Responsive load following
- (5) Extraordinary durability & reliability
 - Over 250 delivery record since 1985
 - Max over 120000 operation hours including HFO operation
- (6) Wide fuel flexibility (Diesel, HFO, etc)
- (7) Low emission, low noise, and low vibration

| | | Output (kW) | | | | | | | | | |
|--------|---------------|-------------|-----|-----|-------|-------|-------|-------|--------|--------|--------|
| Fuel | Gen-set Model | 0 | 300 | 500 | 1,000 | 1,500 | 3,000 | 5,000 | 10,000 | 15,000 | 20,000 |
| Diesel | MGS | | | | | | | | | | |
| | MU-G | | | | | | | | | | |
| | KU | | | | | | | | | | |
| Gas | MGS-G | | | | | | | | | | |
| | KU | | | | | | | | | | |







LINEAR POWER INTERNATIONAL IS AUTHORIZED DISTRIBUTOR OF PRAMAC GENERATORS & LIFTER (ITALY)



PORTABLE

Energy in movement

STATIONARY

Power up to 830kVA

AUTHORIZED DISTRIBUTOR



RENTAL

Mobile applications and rental business

STATIONARY HIGHER POWER

Power above 815kVA



CUSTOMIZED SOLUTIONS

Meeting specific customer requests

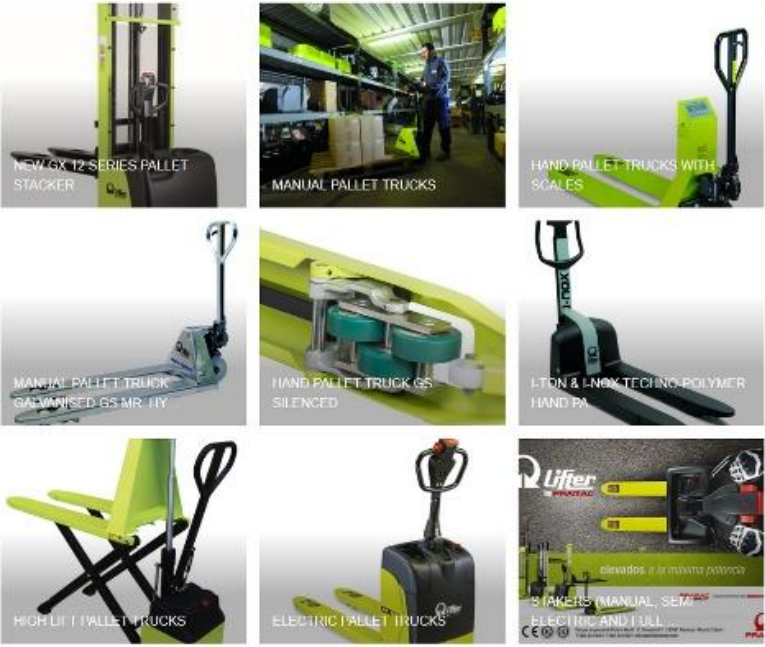
LIGHTING EQUIPMENT

Towers and accessories



GAS GENERATORS

GAS Fueled Industrial Generators



| POWER RANGE | USE | PRODUCT |
|-----------------------|--|---|
| 1-15 kVA Single Phase | Professional: <ul style="list-style-type: none">• Construction• Mobile workshops• Outdoor | Portable professional generators |
| 1-10 kVA | Leisure: <ul style="list-style-type: none">• Camping• DIY• Home standby | Portable leisure generators |



| POWER RANGE | USE | PRODUCT |
|------------------------|---|--|
| 10-800 kVA >800 kVA | Standby / Continuous power for commercial and industrial business | Stationary Generators < 830 kVA Stationary Generators > 815 kVA |
| 20-800 kVA | Mobile Generators for a wide range of applications | Multipurpose mobile generators |
| 20-600 kVA | Mobile Generators for Rental purpose | Rental generators |
| Customized Solutions | Tailor-made power generators | Customized generators |



MATERIAL HANDLING SOLUTIONS



AUTHORIZED SALES AGENT

maximal



maximal

Products-Heavy Duty Forklifts



13.5-X16.0T



14.0-18.0T



20.0-25.0T



T



45T Reach Stacker



9T Empty container handler

M Series Diesel Forklifts



1.5-1.8T



2.0-2.5T



3.0-mini4.0T



5.0-7.0T



8.0-mini12.0T



4.5-mini5.0T



Rough Terrain Forklifts



1.8T/2.5T/3.5T 2WD



4.0T/5.0T 2WD



1.8T/2.5T/3.5T Compact 4WD



2.5T/3.5T 4WD



NEW GX 12 SERIES PALLET STACKER



MANUAL PALLET TRUCKS



HAND PALLET TRUCKS WITH SCALES



MANUAL PALLET TRUCK GALVANISED GS-MR-HY



HAND PALLET TRUCK GS SILENCED



1-TON & 1.6-TON TECHNO-POLYMER HAND PA



HIGH LIFT PALLET TRUCKS



ELECTRIC PALLET TRUCKS



STAKERS (MANUAL, SEMI-ELECTRIC AND FULL-ELECTRIC)



MANDALAY AIRPORT PROJECT

LINEAR POWER INTERNATIONAL

Mandalay International Airport has been operated by MC-Jalux Airport Services (MJAS) and located at TadaU, 35 Km south of Mandalay: the second largest city of Myanmar.

Linear Power International successfully supply synchronizing & power management control system for existing Cummins gensets 3 units & additional 1 Mitsubishi gensets including fuel control solutions. The solutions included SCADA for whole power plant & remote accessing of the SCADA from Airport.

- KEY PRODUCTS:
- Synchronizing Panel

Cummins & Mitsubishi

ComAp SCADA/HMI

Remote monitoring (Secure Wireless Transmission)

Fuel Control System



GRAND MERCURE PROJECT

LINEAR POWER INTERNATIONAL

Grand Mercure Golden Empire is a luxury 5 stars hotel located in Myittar road, South Okkala township, Yangon.

Linear Power International successfully supply two units of Mitsubishi Generators including Installation, testing & comissioning of synchronizing panel.

- KEY PRODUCTS:
- MITSUBISHI 1000KVA x2

Synchronizing Control

Power Management



ILBC PROJECT

LINEAR POWER INTERNATIONAL

International Language & Business Center (ILBC)
is a top famous private school established since 1995 in
Myanmar with many branches.

ILBC is loyal customer of Linear Power International
,taking care of backup power systems & maintenance jobs.

KEY PRODUCTS: PRAMAC Generators
more than 10 units for schools



MYANMAR BREWERY PROJECT

LINEAR POWER INTERNATIONAL

Myanmar Brewery Limited (MBL) is producer and distributor
of well known beer and stout such as Myanmar Beer,
Kirin Ichiban, Andaman Gold, Black Shield, etc...
& exports beers to many countries.

Linear Power International successfully supply
four units of sound-proof PRAMAC diesel generators including
Installation, testing & comissioning.

KEY PRODUCTS: PRAMAC 1650P x4



NESTLE MYANMAR PROJECT

LINEAR POWER INTERNATIONAL

Nestle', one of the world's largest food company managed warehouse operations for its food products in Myanmar. located at U Shwe Owe Street, Dagon Seikkan Industrial Zone.

Linear Power Successfully supply, install & comissioning of Mitsubishi Soundproof 1000KVA Diesel generator & Fuel system

KEY PRODUCTS: MITSUBISHI 1000KVA
FUEL CONTROL SYSTEM
111% LOAD TEST



ACECOOK PROJECT

LINEAR POWER INTERNATIONAL

ACECOOK, a Japanese instant noodle maker manufacturing some products in Myanmar factory which is located in Thilawa SEZ.

Linear Power Successfully supply, install & comissioning of Mitsubishi Soundproof 1000KVA Diesel generator

KEY PRODUCTS: MITSUBISHI 1000KVA
75 dBA at 1 meter



NOVOTEL HOTEL PROJECT

LINEAR POWER INTERNATIONAL

NOVOTEL is a famous luxury 5 stars hotel located in Pyay road, Kamayut township, Yangon.

Linear Power International successfully supply three units of Mitsubishi Generators including Installation, testing & comissioning of synchronizing panel.

KEY PRODUCTS: MITSUBISHI 1600KVA x3
Synchronizing Control
Power Management
Sound Proofing Room Installation



HILL TOP VISTA PROJECT

LINEAR POWER INTERNATIONAL

Hill Top Vista is a luxury condominium located in Ahlone township, Yangon.

Linear Power International successfully supply three units of Mitsubishi Generators with 1000KVA each. Linear Power also supply synchronizing panel for these generators using ComAp control system.

KEY PRODUCTS: MITSUBISHI 1000KVA x3
COMAP IG NTC BB x3
InteliVision 5 x3
Sound Proofing Room Installation



STATE LEVEL POWER PLANT PROJECTS

| | |
|--------------|--|
| Project Info | DAWEI Temporary Power Supply 12MW |
| JOB | 25 units of 500KVA PRAMAC diesel generators are synchronized and step-up to supply power to DAWEI region. 2018-2019 |



| | |
|--------------|--|
| Project Info | MYEIK 12MW diesel power plant |
| JOB | Total 29 units of various diesel generators (500KVA PRAMAC diesel generators & 500KVA GENPOWER) are synchronized and step-up from 0.4 to 11 Line using automatic control systems are switch gears supplying electricity to Myeik City. |

| | |
|--------------|---|
| Project Info | KANBAUK GAS POWER PLANT 20MW |
| JOB | Gas generators with total of 20 MW are synchronized and connected in a single control loop able to control via SCADA/HMI supplying electricity to entire DAWEI region. Design, land clearing, installation & commissioning. |



| | |
|--------------|---|
| Project Info | KYAW GAS POWER PLANT |
| JOB | Kyaw is near GanGaw region. In that site, 7 units of 2MW gas engines are synchronized and step up to back to national grid. |

| | |
|--------------|--|
| Project Info | MYANMAR GOLDEN EAGLE (ThanLyn) |
| JOB | SCADA/HMI system for the factory power system, 33KV panel, 11KV panel including synchronizing panel for 4 units of 1820KVA diesel generators with sync back return system. |



| | |
|--------------|---|
| Project Info | M.O.E.P |
| JOB | 8 units of Cummins 200KVA diesel generators are supplied to MOEP. |



| | |
|--------------|--|
| Project Info | ILBC MYANMAR |
| JOB | ILBC international school is loyal customer of LPI and supplied more than 10 units of power systems. |

| | |
|--------------|--|
| Project Info | SHWE LI HYDRO POWER PLANT |
| JOB | Supplied 2 units of Mitsubishi 1280KVA generators to the power plant |



| | |
|--------------|---|
| Project Info | NESTLE MYANMAR |
| JOB | 1000 KVA MITSUBISHI diesel generator soundproof type. Load Testing. |

| | |
|--------------|---|
| Project Info | UNITED BEAUTY PALACE (SHWE LIN BAN) |
| JOB | 2 units of MITSUBISHI 1000KVA diesel generators are synchronized using synchronizing panel. 80dBA@ 1 meter sound proof system. |



SOLAR POWER PLANT PROJECTS

| | |
|--------------|---|
| Project Info | GAW YAN GYI HOTEL SOLAR PROJECT |
| JOB | 50KWp solar system with 100KWh lithium battery bank for hotel operation |



| | |
|--------------|--|
| Project Info | 7 MILE PRIVATE HOUSE |
| JOB | 5KW x 6 units total of 30KW off-grid hybrid solar system |



| | |
|--------------|--|
| Project Info | SHWE KYAR PIN (NAY PYI TAW) |
| JOB | 5KW solar system for garden lights and pumps |



| | |
|--------------|--|
| Project Info | BAW DI MYAING MEDITATION CENTER |
| JOB | Schneider off-grid system with 8 units of 200Ah battery bank |

| | |
|--------------|--------------------------------|
| Project Info | YANGON CIRCULAR RAILWAY |
| JOB | SUS application control panels |



Electrification of Anan Kwin Village with 400KW Hybrid Micro-grid System

Article by: Moe Tun Wai

Anankwin is a big village with no national electricity grid in KyarInnSeikGyi Township, Kayin State, Myanmar.(Google map: Anankwin).



Linear Power International Company, distributor of ComAp control systems is working together with Sule Tech, MREF & AungThidiPhyo companies to setup a 400KW solar diesel hybrid system in that village. The system include 2 standalone diesel generators: 120KW & 200KW which are originally mounted with ComAp AMF20 controllers. We use IGNT-BB controller s on remote panels to synchronize these generators.



Currently using 3 Schneider CL60E on-grid/grid-tie inverters for this project. Each inverters support 14 strings of MPPT with 1000V max for each strings. Max power output for each inverters is 66KW, 400V, 50Hz.

Solar panels are LONGI brand and 340Wp 48V for each panels. We install 20-21 panels for each string. So the maximum number of panels for each inverter is 280. We used 840 panels for 3 inverters at the moment and we will combine up to 6 inverters.



Photo: installation of Schneider CL60E inverters



Photo: setup of PV panels

ComAp Master controller IS-NTC Hybrid can control the output of the solar inverters depending on the active load. When the load is lower than 30% of the smaller generator, there will be no PV output from inverters. When the load is higher than 30% of the smaller generator, the rest will be taking care by PV output. When the load is so much high: if 80% of 1st generator and the PV output is at it's maximum, the 2nd generator will automatically start and synchronize with 1st generator to form a stable micro-grid. Best kind for fuel saving solution.





System integrating/Commissioning of the project is done by Linear Power International with the remote support of ComAp Singapore for full three days. Some main issues while developing the solution are reading of modbus registers from Schneider inverters in order to control the output of the inverters & biasing of new kind of AVR on generator for synchronizing. Finally, the logic are perfectly works and tested with 580KW variable resistive load bank. Also, recorded the whole process with Winscope while playing the load bank.

Since Myanmar is booming market is solar business, this successful story spread through online social media and local news. Linear Power got its first hybrid project for the reference & the journey is about to continue with a lot of upcoming projects.

The heart of this power plant is ComAp IntelliSys-Hybrid controller, IntelliGen, IntelliVision 17 Touch & ComAp 5" displays. Linear Power is ready to go aggressively inside this kind of hybrid solar projects with support of ComAp Singapore team. They don't hesitate of any complex control systems.

3 Feb 2019 : Opening ceremony of the project is celebrated and people of local authority, villagers, regional authorities, financier, developer, system integrator all meet up.



Photo: KaYin Dome Yame (traditional dance performace) at opening ceremony





GLASS FACTORY (MYANMAR GOLDEN EAGLE) THANLYIN

A factory with a lot of compressors & cooling water pumps required higher starting loads. Such factory need most efficient & complex power management system. Linear Power successfully supply SCADA/HMI system for the factory power system, 33KV panel, 11KV panel including synchronizing panel for 4 units of 1820KVA diesel generators, Utility/Main controller & sync back return system. Quick Start system is also use in this project. Logic link also supply fuel system & fuel control system.





MERCURY OUTBOARDS

You have to live it to believe it!



BLUESUN SOLAR


400-600W Shingled PV panels များ
100KW, 5.5KW, 3KW Hybrid အင်ဗာတာများ
MPPT Charge Controller များ
4mm, 6mm DC Cables
GEL/Lithium Solar Batteries များ
PV Accessories များ

LP LINEAR POWER INTERNATIONAL CO., LTD www.lpimyanmar.com
အမှတ် အေ (၁), ဘုရင့်နောင်လမ်း၊ ရွှေပင်လုံရိပ်မွန်၊ မြောက်ဒဂုံ၊ ရန်ကုန်၊ ဖုန်း ၀၁ ၈၀၁၀၇၄၆၊ ၀၉ ၂၀၃၇၀၂၉

**SOLAR LIGHTING
SOLAR PANELS
COMPLETE SYSTEMS
GARDEN LIGHTING
SOLAR GATGETS**



BROOKER



Outboard motors:
We supply engines for Marine Jetski, Speed boards & inflation type boards .
Also supply different kinds of spare parts and accessories. (In Stock)

REGIN THE CHALLENGER



WE TAKE BUILDING AUTOMATION PERSONALLY

Everything under the same roof

SCADA system software, Programming tools, Drive, Motor loading system integration, Complete with heating service

Processor, Energy programmable controllers, Room control, UO modules, Displays, System accessories

HVAC: Pre-programmed controllers, Room controllers, Electric heating controllers, Thermostats, Sensors and switches, Detectors, Energy meters, Valve actuators, Valves, Damper actuators, Accessories

ComAp The heart of smart control




WE ARE HYBRID READY!
SOLAR WIND BATTERY
GRID GENERATORS
TURBINES

PILLER Power Systems

ACTIVE POWER

THE REAL & BEST SOLUTION TO REPLACE BATTERY BACK-UP SYSTEMS !



SPARE PARTS



YANGON OFFICE
A1, BAYINT NAUNG RD,
SHWE PINLON
AVENUE, NORTH DAGON
TOWNSHIP,
YANGON. MYANMAR.
TEL: +951 8010746

MANDALAY BRANCH
NO PA3/101 60TH STREET
BETWEEN 41x42 ST,
MAHAR AUNG MYAE
TOWNSHIP, MANDALAY,
MYANMAR
TEL: +952 406 2219

SERVICE CENTER
ZONE (2), EXTENSION
144/(458-459)
CORNER OF SIN PHYU SHIN
STREET &TINE TAR MIN GYI
STREET
SOUTH DAGON TOWNSHIP
YANGON MYANMAR
+959 452 355 525

MYEIK BRANCH
NO 248, THEL KWIN 2 STREET
THARKAYTA QTR, MYEIK
+959 962551516

WWW.LPIMYANMAR.COM
INFO@LPIMYANMAR.COM